

INSULTHERM™ TRU-FIT

- **UL Recognized: VW-1**
- **Rated To 464°F**
- **For High Temp - Low Voltage Applications**
- **Easy To Install-Cuts With Scissors**
- **Resists Most Organic Solvents**
- **Cut And Abrasion Resistant**



**Cut Cleanly
Scissors**

Material

Acrylic Coated Fiberglass

Grade

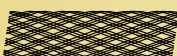
FGL

Wall Thickness

Refer to Chart

Drawing Number

TF001INS-WD



TECHFLEX
Braided Sleeving Products

www.techflex.dk

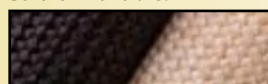
Nominal Size	Diameter	Part #	Wall Thickness	Expansion Range		Bulk Spool	Shop Spool	Available Colors
				Min.	Max.			
24	0.022"	FGLG.24	0.006"	0.020"	0.027"	N/A	2,000'	2
22	0.027"	FGLG.22	0.006"	0.025"	0.032"	N/A	2,000'	2
20	0.034"	FGLG.20	0.006"	0.032"	0.039"	N/A	2,000'	2
18	0.042"	FGLG.18	0.006"	0.040"	0.049"	2,000'	1,000'	2
16	0.053"	FGLG.16	0.006"	0.051"	0.061"	2,000'	1,000'	2
14	0.066"	FGLG.14	0.006"	0.064"	0.072"	2,000'	1,000'	2
12	0.085"	FGLG.12	0.006"	0.081"	0.089"	2,000'	500'	2
11	0.095"	FGLG.11	0.008"	0.091"	0.101"	2,000'	500'	2
10	0.106"	FGLG.10	0.008"	0.102"	0.112"	2,000'	500'	2
9	0.118"	FGLG.09	0.008"	0.114"	0.124"	1,000'	250'	2
8	0.133"	FGLG.08	0.008"	0.129"	0.141"	1,000'	250'	2
7	0.148"	FGLG.07	0.008"	0.144"	0.158"	1,000'	250'	2
6	0.166"	FGLG.06	0.010"	0.162"	0.178"	1,000'	250'	2
5	0.186"	FGLG.05	0.010"	0.182"	0.198"	500'	125'	2
4	0.208"	FGLG.04	0.010"	0.204"	0.224"	500'	125'	2
3	0.234"	FGLG.03	0.010"	0.229"	0.249"	500'	125'	2
2	0.263"	FGLG.02	0.010"	0.258"	0.278"	500'	125'	2
1	0.294"	FGLG.01	0.010"	0.289"	0.311"	250'	125'	2
0	0.330"	FGLG.00	0.010"	0.325"	0.347"	250'	125'	2
3/8"	0.375"	FGL0.38	0.010"	0.375"	0.399"	100'	50'	2
7/16"	0.438"	FGL0.44	0.010"	0.438"	0.462"	100'	50'	2
1/2"	0.500"	FGL0.50	0.010"	0.500"	0.524"	200'	N/A	2
5/8"	0.625"	FGL0.63	0.010"	0.625"	0.655"	200'	N/A	2
3/4"	0.750"	FGL0.75	0.010"	0.750"	0.786"	100'	N/A	2

Heat Treated, Fray-Resistant Fiberglass Sleeving

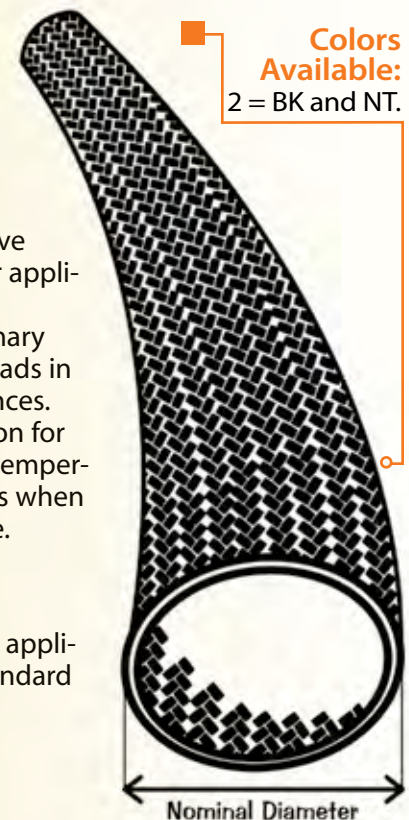
Techflex INSULTHERM TRU-FIT (FGL) is a braided fiberglass sleeving which has been heat treated and impregnated with an acrylic binder to reduce fraying and dusting, and improve usability and performance. FGL is engineered for applications where temperatures as high as 1,200°F may be encountered. FGL is used as primary insulation on low voltage applications such as leads in toasters, coffee makers, ranges and other appliances. FGL may also be used as insulation and protection for small heaters and resistors that operate at high temperatures, and to insulate over soldered connections when exposure to solder melt temperatures is possible.

Insultherm Tru-Fit provides a sturdy, long lasting and inexpensive insulation solution. It is flexible and expandable, and can easily be installed over applications with irregular shapes and tight turns. Standard color are Black and Natural, but other colors are available by special order. Contact your Account Representative for details.

Colors Available:



Black (BK) and Silver (SV).



Colors Available:
2 = BK and NT.



INSULTHERM™ TRU-FIT



Abrasion Resistance
Medium

Abrasion Test Machine
Taber 5150

Abrasion Test Wheel
Calibrase H-18

Abrasion Test Load
500g



Rating _____ **UL VW-1**



Chemical Resistance

1=No Effect 4=More Affected
2=Little Effect 5=Severely Affected
3=Affected

Aromatic Solvents _____ 1
Aliphatic Solvents _____ 1
Chlorinated Solvents _____ 1
Weak Bases _____ 1
Salts _____ 1
Strong Bases _____ 1
Salt Water *0-S-1926* _____ 1
Hydraulic Fluid *MIL-H-5606* _____ 1
Lube Oil *MIL-L-7808* _____ 1
De-Icing Fluid *MIL-A-8243* _____ 1
Strong Acids _____ 2
Strong Oxidants _____ 2
Esters/Keytones _____ 1
UV Light _____ 2
Petroleum _____ 1
Fungus *ASTM G-21* _____ 1
Halogen Free _____ Yes
RoHS _____ Yes
SVHC _____ None

Melt Point
ASTM D-2117

2,048°F (1,120°C)

Maximum Continuous
Mil-I-23053

1,202°F (650°C)

Minimum Continuous
-94°F (-70°C)



PHYSICAL PROPERTIES

Monofilament Diameter _____ **NA**
ASTM D-204

Flammability Rating _____ **VW-1**
FMVSS-302 Approved

Recommended Cutting _____ **Scissor**

Colors _____ **2**

Wall Thickness _____ **.006-.016**

Tensile Strength (Yarn) _____
ASTM D-2256 Lbs

Specific Gravity *ASTM D-792* _____ **1.0-1.8**

Moisture Absorption _____ **.01**
% ASTM D-570

Hard Vacuum Data *ASTM E-595 at 10-5 torr*

TML _____ **.02**

CVCM _____ **.01**

WVR _____ **.00**

Smoke D-Max _____
ASTM E-662

Outgassing _____ **Low**

Oxygen Index _____
ASTM D-2863